

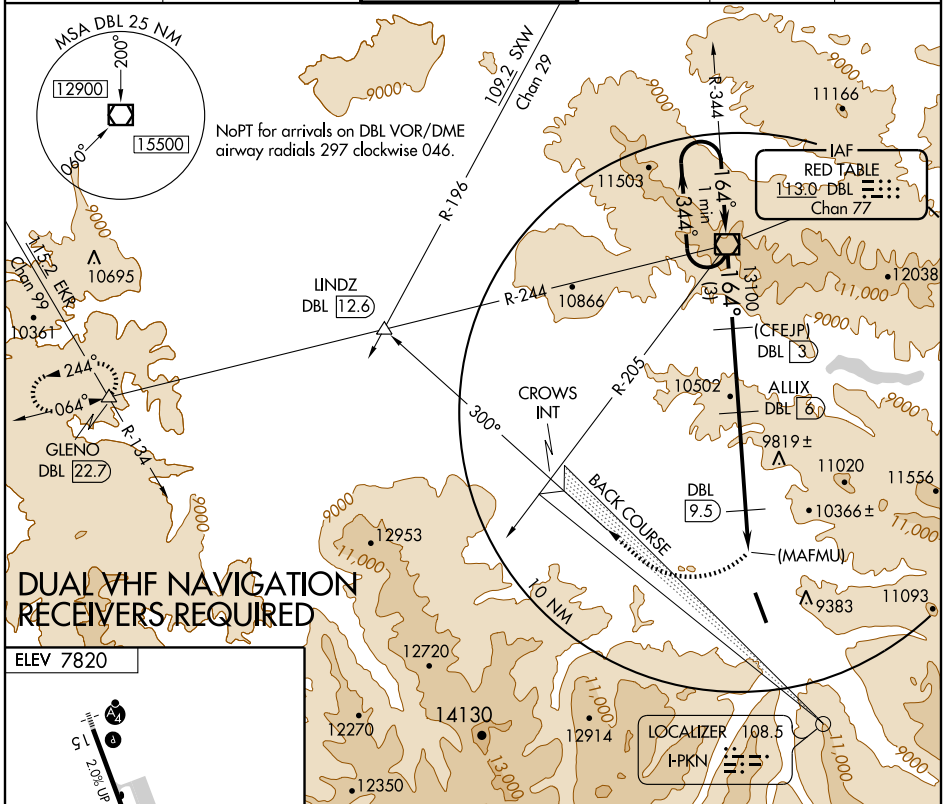
VOR/DME DBL 113.0 Chan 77	APP CRS 164°	Rwy Idg TDZE Apt Elev 7820	N/A N/A 7820
---	------------------------	---	---------------------------

VOR/DME or GPS-C

ASPEN-PITKIN COUNTY/SARDY FIELD (A5E)

<p>NA Obtain local altimeter setting on CTAF. When not received, procedure not authorized. Procedure not authorized at night.</p>	<p>MISSED APPROACH: Climbing right turn to 14000 via heading 300° to intercept and proceed via I-PKN northwest course (300°) and DBL VOR/DME R-244 to GLENO Int/DBL 22.7 DME and hold.</p>
--	---

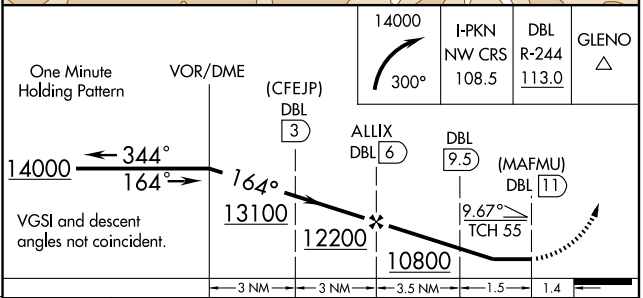
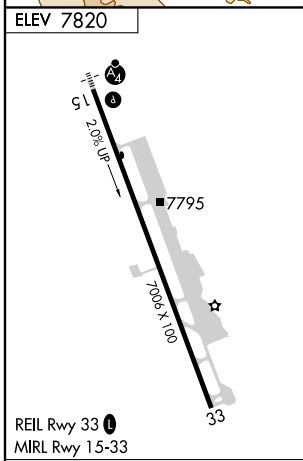
ATIS 120.4	ASPEN APP CON * 123.8 288.3	ASPEN TOWER * 118.85 (CTAF) 288.3	GND CON 121.9	CLNC DEL 123.75	UNICOM 122.95
----------------------	---------------------------------------	---	-------------------------	---------------------------	-------------------------



SW-1, 22 NOV 2007 to 20 DEC 2007

SW-1, 22 NOV 2007 to 20 DEC 2007

DUAL VHF NAVIGATION RECEIVERS REQUIRED



One Minute Holding Pattern	VOR/DME (CFEJP) DBL 3	ALLIX DBL 6	DBL 9.5 (MAFMU) DBL 11	14000	I-PKN NW CRS 108.5	DBL R-244 113.0	GLENO △
14000	← 344°	→ 164°	13100	12200	10800	9.67° TCH 55	
VGSI and descent angles not coincident.	3 NM	3 NM	3.5 NM	1.5	1.4		
CATEGORY	A	B	C	D			
CIRCLING	10200-2	2380 (2400-2)	10200-3	2380 (2400-3)			NA